



TUOHY
O'TOOLE

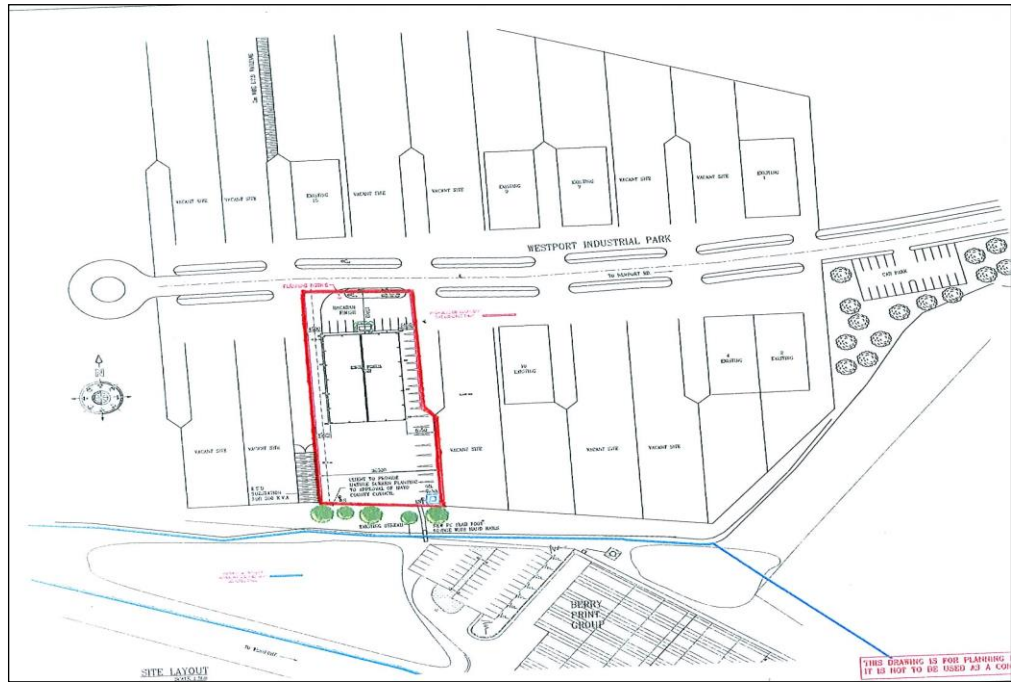
Westport (098) 28000
Castlebar (094) 9028710
info@tot.ie

www.tot.ie

Estate Agents | Auctioneers | Valuation Surveyors

SITES 14 & 16

WESTPORT BUSINESS PARK NEWPORT ROAD, WESTPORT, CO. MAYO



FEATURES:

- Situated in existing business park
- Close proximity to Westport Town - c. 2km (c. 1 miles)
- Mains services available
- Superb development opportunity (Subject to P.P.)
- Excavated to provide lower ground floor store

FOR SALE



PSRA License No. 001318

Tuohy O'Toole give notice that these particulars/dimensions, whilst believed to be accurate are set out as a general outline for guidance and do not constitute any part of an offer or contract. All intending purchasers should satisfy themselves by inspection or otherwise as to their accuracy.

DESCRIPTION

The site for sale is located at Westport's Business Park, which is less than a mile from Westport Town Centre and is just off the Westport-Newport Road (N59). Current occupiers include a mix of retail, distributors, light manufacturing and warehousing, examples are The Tile Warehouse, Creative Kitchens, AMAC Paint Supplies, Scotts Plumbing & Sanitary Supplies, to name just a few.

Site No. 14: Comprises c. 0.1525 Hectares (c.0.377 Acres)

Site No. 16: Comprises c. 0.1361 Hectares (c.0.336 Acres)

Circa 30m road frontage

The sale affords numerous opportunities for varying potential users in a scheme, which is now only coming into its prime.

V.A.T. & STAMP DUTY

Any V.A.T. and Stamp Duty arising out of the transaction will be the responsibility of the purchaser

ASKING PRICE: Open to Offers

DIRECTIONS

Westport - Newport Road. Turn left for the Business Park, proceed to the end of the existing development and the site is on the left hand side with our For Sale sign erected thereon.